



www.helenarubinstein.com



Re-PLASTY PRESCRIPTION

— THE 1ST MADE-TO-MEASURE COSMETIC INTERVENTION —
"PERFECT BEAUTIFUL SKIN"



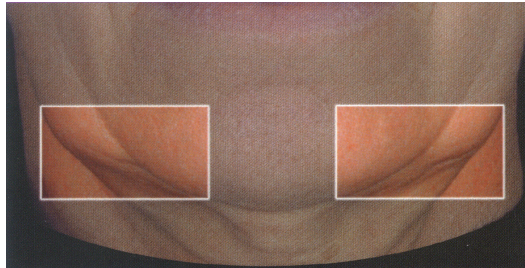
CLINICAL DIAGNOSIS GUIDE
International version
INTERNAL USE ONLY



Re-PL PRESCF

SUBST

LOSS OF PI



DEFINITION

Sagging of the lower part of the face due to the gravity.
It causes a deformation of the face's original oval shape.

AREA

Lower part of the cheek on both sides of the chin.

EVALUATION

- ➔ Evaluate the sagging severity of the lower part of the face on each side of the chin.
- ➔ Do not take into account the double chin if it exists.

ASTY RIPTION

TANCE

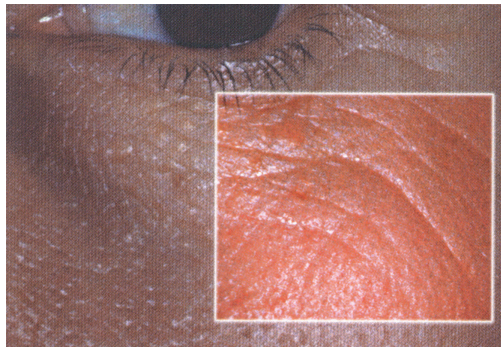


LUMPNESS



Pictures and explanations extracted from SKIN AGEING ATLAS Volume 1 European population (p.56- 57), L'Oreal Research

WRINKLES



DEFINITION

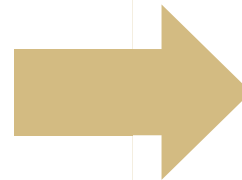
It is about folds originating at the edge of the eye orbit, found at the malar zone, below crow's feet, eye orbit excepted.

AREA

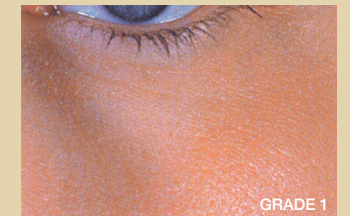
Bounded above by the edge of the eye orbit, stretch laterally and downward on the malar zone.

EVALUATION

- ➔ Evaluate the depth of the deepest wrinkle.
- ➔ Do not take into account wrinkles, fine wrinkles and folds in the inferior.
- ➔ Do not take into account the number of wrinkles.
- ➔ Do not take into account the length of wrinkles.
- ➔ Do not take into account scars.



1
Smooth skin/
fine lines



2
Medium



3
Deep wrinkles

